



Elite Pre-stained Protein Ladder Datasheet

The Elite Pre-stained Protein Ladder is a three-colour protein standard with 10 pre-stained proteins covering a wide range of molecular weights from 6.5 to 270 kDa. Designed for monitoring protein separation during SDS-PAGE, verifying Western transfer efficiency on membranes and for approximating the size of proteins.

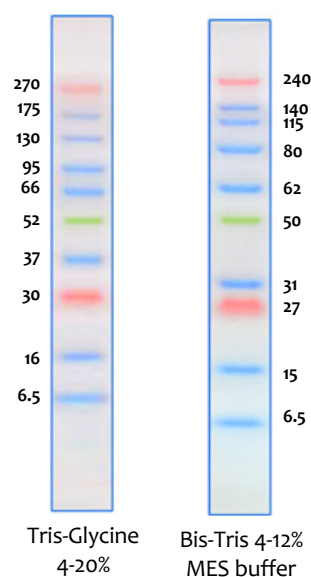
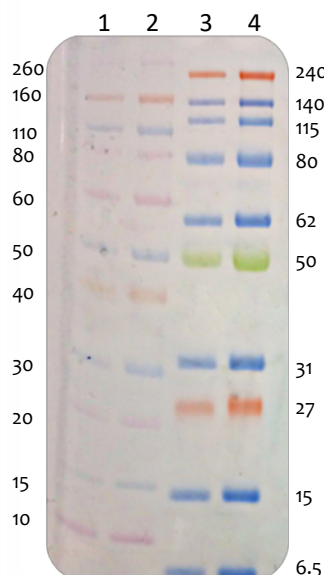
Features

- High-intensity, 3-colour MW determination
- Ultra-clear and expanded MW range (6.5-270 kDa)
- Clear separation for high MW proteins
- Up to 100% electroblot transfer efficiency
- LICOR-compatible

*Performance Data: 4-12% Bis-Tris MES SDS

- Lane 1: Novex Sharp (ThermoFisher) 5µl
- Lane 2: Novex Sharp (ThermoFisher) 10µl
- Lane 3: Protein Ark Elite Protein Ladder 5µl
- Lane 4: Protein Ark Elite Protein Ladder 10µl

*Qamar S, Cambridge Institute for Medical Research, Cambridge, UK, October 2018.



Specifications

| | |
|-----------------|---|
| Recommended use | 3 µl or 5 µl per loading for clear visualization during electrophoresis on 15-well or 10-well mini-gel, respectively. 2.5 µl per well for general Western transferring. |
| Storage buffer | 62.5 mM Tris-H ₃ PO ₄ (pH 7.5 at 25 °C), 1 mM EDTA, 2% SDS, 10 mM DTT, 1 mM NaN ₃ , 33% glycerol |
| Quality Control | Under suggested conditions, ELITE Prestained Protein Ladder resolves 10 major bands in 4-12% Bis-Tris Gel (MES buffer) and after Western blotting on Nitrocellulose membrane. |
| Storage | Stable for up to 2 weeks at 25°C. Stable for up to 3 months at 4°C. For long term storage, store at -20°C. |

Ordering Information

| Name | Pack Size | Product Code |
|---|-------------|--------------|
| 0.5 ml Elite Pre-stained Protein Ladder | 2 x 0.25ml | PAL-EPL-500 |
| 2.5 ml Elite Pre-stained Protein Ladder | 10 x 0.25ml | PAL-EPL-2500 |



The Innovation Centre, 217 Portobello, Sheffield S1 4DP, UK.
Email: info@proteinark.com Telephone: +44 (0) 114 224 2236
Web: www.proteinark.com Fax: +44 (0) 114 224 2222